



Red Hawk Farms

Phase 1A – 13 Lots

E. Gailen Ln, Milton WI

Lot #	Lot Sq Ft	Lot size	Construction Status	Availability
1	15,697	.36 acre		Sold
2	12,320	.28 acre	1481 sq ft home, status - foundation	Available
3	14,114	.32 acre		Sold
4	14,101	.32 acre		Sold
5	16,125	.37 acre		Sold
6	11,700	.26 acre	1456 sq ft home, status - foundation	Available
7	10,800	.24 acre	1460 sq ft home, status - framed	Available
8	9,840	.22 acre		Sold
29	10,920	.25 acre		Sold
30	12,597	.29 acre		Sold
31	12,814	.29 acre		Sold
32	12,350	.28 acre		Sold
33	15,447	.35 acre		Sold

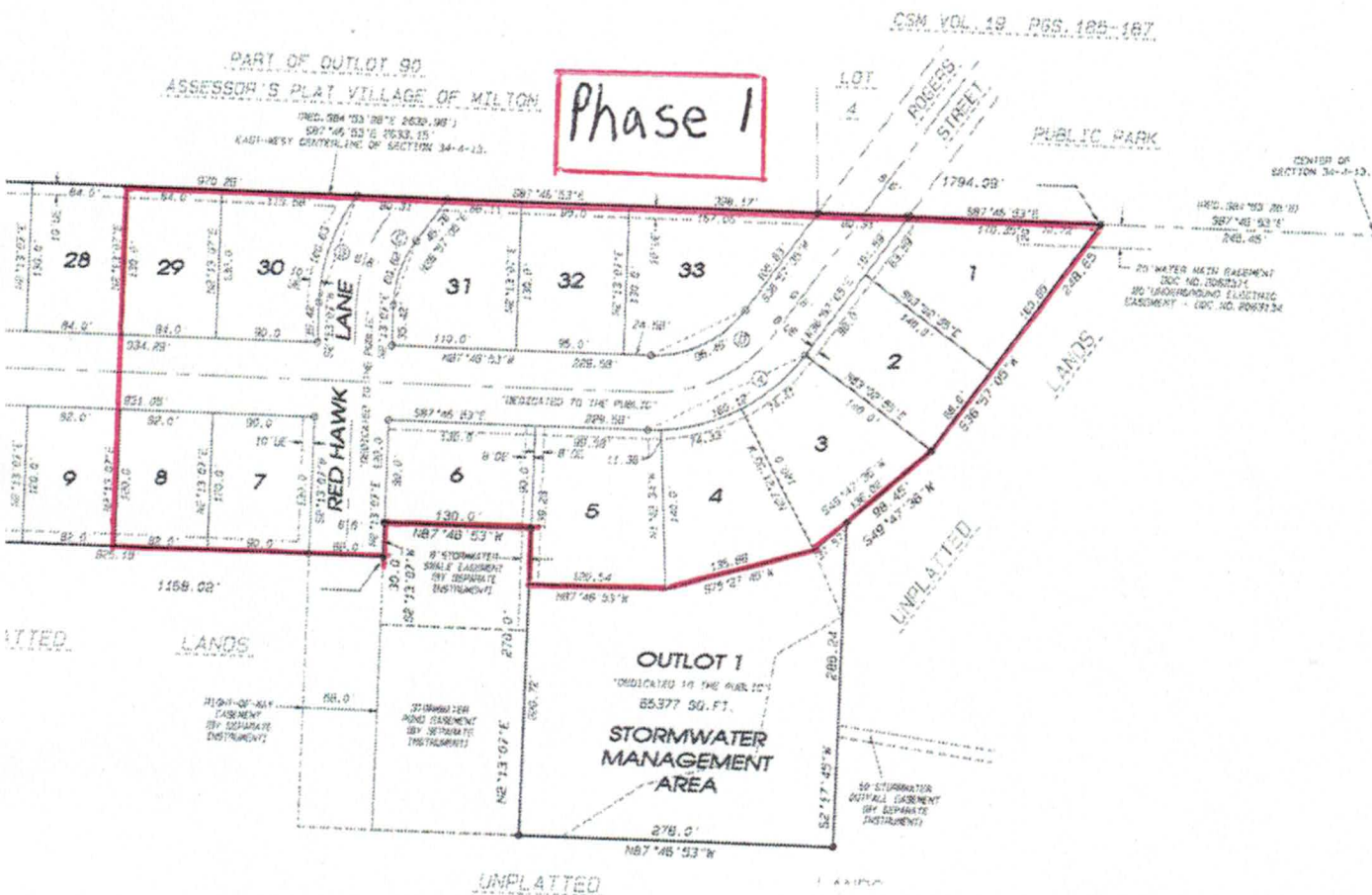
***Lots available with building contract only. Availability is subject to change.**

HAWK FARMS

SW 1/4 AND PART OF THE NE 1/4 OF THE SW 1/4 OF SECTION 34,
M.. CITY OF MILTON, ROCK COUNTY, WISCONSIN.

LOT AREA CHART


LOT 1 = 15697 SQ. FT.	LOT 18 = 12941 SQ. FT.
LOT 2 = 12390 SQ. FT.	LOT 19 = 13239 SQ. FT.
LOT 3 = 14114 SQ. FT.	LOT 20 = 12123 SQ. FT.
LOT 4 = 14101 SQ. FT.	LOT 21 = 10929 SQ. FT.
LOT 5 = 18125 SQ. FT.	LOT 22 = 10929 SQ. FT.
LOT 6 = 11700 SQ. FT.	LOT 23 = 10790 SQ. FT.
LOT 7 = 10800 SQ. FT.	LOT 24 = 10660 SQ. FT.
LOT 8 = 9840 SQ. FT.	LOT 25 = 10920 SQ. FT.
LOT 9 = 9840 SQ. FT.	LOT 26 = 11090 SQ. FT.
LOT 10 = 9840 SQ. FT.	LOT 27 = 10920 SQ. FT.
LOT 11 = 9840 SQ. FT.	LOT 28 = 10920 SQ. FT.
LOT 12 = 9840 SQ. FT.	LOT 29 = 10920 SQ. FT.
LOT 13 = 9840 SQ. FT.	LOT 30 = 12937 SQ. FT.
LOT 14 = 9840 SQ. FT.	LOT 31 = 12814 SQ. FT.
LOT 15 = 9840 SQ. FT.	LOT 32 = 12350 SQ. FT.
LOT 16 = 9840 SQ. FT.	LOT 33 = 15447 SQ. FT.
LOT 17 = 12012 SQ. FT.	




There are no objections to this plat with respect to
Sees. 236.15, 236.16, 236.20 and 236.21(1) and (2),
Wis. Stat., as provided by s. 236.12, Wis. Stat.

Certified _____, 20____

Department of Administration



Forster Construction LLC
4450 Milton Ave Suite 206
Janesville WI 53546
Tomforsterconstruction.com

 <p>509 W. MILWAUKEE ST. JANESVILLE, WI 53504 WWW.COMBSANDASSOCIATES.COM</p>	• LAND SURVEYING	DATE 11/08/17	REVISION 12/29/17	
	• LAND PLANNING	BY sll	01/16/18	
	• CIVIL ENGINEERING	PROJECT NO. 117-052		
		CLIENT FORSTER		
		TEL: 608 750-0575 FAX: 608 750-0534		